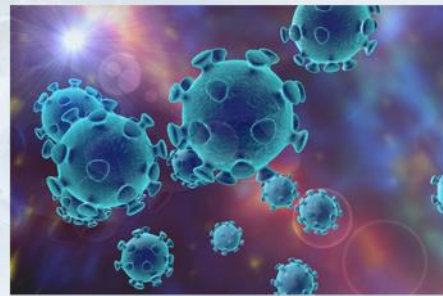


COVID-19 Update

Employee and Physician Information



Update from CEO and Emergency Operations Centre (EOC) June 2, 2021

General update

- There were 17 new people diagnosed with COVID-19 in the province today:
 - 12 in the Western Health region
 - 1 in the Eastern Health region
 - 4 in the Central Health region
 - There are now 14 confirmed cases and 4 presumptive cases in the Western Health region that are related as well as 3 presumptive cases not related to the cluster.
 - Please see pandemic hub for up to date information [here](#).
- Public Health advised yesterday that Alert Level 4 was expanding to communities along highway route 403, including Flat Bay, St. Theresa's and Journois. This is in addition to the towns already in Alert Level 4 of St. George's, Stephenville Crossing, Stephenville, Port au Port East and all towns on the Port au Port Peninsula and towns and communities along Routes 460, 461, 462, 463 and 490 (see more information about Alert Level 4 and map of communities included [here](#)). Changes in Alert Levels depend on a range of factors including, but not limited to, the number of people who are positive, the number of contacts, connections between communities, vaccination rates, the demographics of a population, and the variant of the virus being seen.
- We will have an COVID-19 all staff meeting on Friday at 9:00 a.m. A TEAMS meeting invitation was sent out to all staff by email.

Operations Update

- Patient/Client and visitor screening tools were updated yesterday and shared throughout the region. Please ensure you have the latest version in your area. The patient/client tool is available in eforms and the visitor screening tool should be placed at all visitor screening desks (see [here](#)).
- Due to COVID vaccine appointment availability in some areas, an earlier second dose appointment for staff and physicians who received their first dose at least 8 weeks prior. To book an appointment click [here](#) and choose "first dose appointment." We ask that staff show their Western Health ID and advise of your original second dose appointment at the vaccination clinic.

Human Resources Update

- We all need to continue to maintain adherence to physical distancing guidelines. This includes all common areas where people gather such as staff lounges, change rooms,

care stations, kitchens and cafeterias. Seating in these areas has been arranged to be in compliance with physical distancing guidelines and we ask that chairs not be moved.

- Have you ever tried to fix an ongoing lack of energy by getting more sleep — only to do so and still feel exhausted? Read this article to learn about different types of rest ([here](#)).
- Bridge the gApp is a way to connect with guidance and support for mental health and addictions in Newfoundland and Labrador. There are variety of free webinars on various topics available such as: Anxiety, Depression, Coping with Stress, Self-Care and Parenting 101 (see more [here](#)).
- You can also reach the Employee Assistance Program at 1-866-784-5306.
- Please feel free to call the Toll Free COVID-19 Navigation Staff Line (1-833-920-0096) or email COVID19@westernhealth.nl.ca with your questions or inquiries.

Please see our [COVID-19 Intranet page](#) for more information