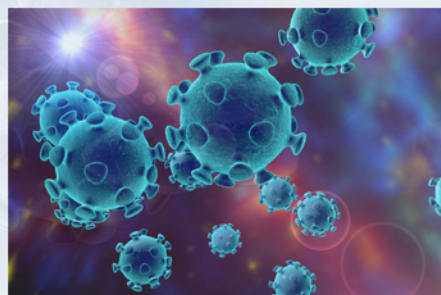


# COVID-19 Update

## Employee and Physician Information



### Update from CEO and Emergency Operations Centre (EOC) February 22, 2021

#### General update

- There are 14 new COVID-19 cases confirmed in the province today; 12 in the Eastern Health region; one in the Western region which is travel related, and one in the Labrador-Grenfell region which is travel related. There are 407 active cases in the province. Please see pandemic hub for up to date information ([here](#)).

#### Operations Update

- Vaccine clinics will be held in each primary health care area over the next two weeks. We are expecting that all staff, physicians and students who work in acute care, long term care, and primary health care, including community based physicians' offices who have already requested vaccination will be offered an appointment by the end of next week.
- Information will be shared regarding vaccination for staff who work outside these areas as it is available.

#### Human Resources Update

- If you work in a patient/client/resident care area and have not been fit tested in the past two years, please complete a request to be fit tested form [here](#) and send to [fittesting@westernhealth.nl.ca](mailto:fittesting@westernhealth.nl.ca) or call (709) 784-5100.
- It is important that you complete your daily COVID-19 self-assessment one hour before work (see [here](#)). Those who work in long term care must complete the self-assessment twice daily. If you are unwell, do not report to work, report your absence through established process and call Employee Health at 1-833-710-0408.
- Moving back into Alert Level 5 is a difficult and stressful time for many. You are encouraged to seek assistance, if needed, by contacting the Employee Assistance Program (EAP) at 1-866-784-5306.
- Please feel free to call the Toll Free COVID-19 Navigation Staff Line (1-833-920-0096) or email [COVID19@westernhealth.nl.ca](mailto:COVID19@westernhealth.nl.ca) with your questions or inquiries.