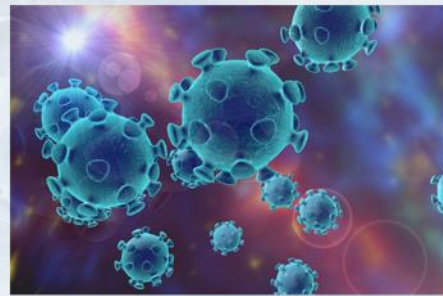


# COVID-19 Update

## Employee and Physician Information



### Update from CEO and Emergency Operations Centre (EOC) February 15, 2021

#### General update

- There are 7 new COVID-19 cases confirmed in the province today; 6 of the confirmed cases are in the Eastern Health region and 1 in the Western Health region. The case in the Western Health region is travel related. There are also 21 new presumptive cases in the province today and 298 active cases. Please see pandemic hub for up to date information ([here](#)).
- There is a meeting for all staff to connect with the EOC tomorrow from 11 a.m. to 12 p.m. An invitation was sent to all staff by email.

#### Operations Update

- Yesterday Western Health shared an update about services being provided in Alert Level 5 (read [here](#)). Currently we are prioritizing urgent and emergent services and contacting individuals with appointments for tests, procedures or other services to advise if the appointment is proceeding, postponed, or if it will be held virtually.
- Western Health provided an update on visitation for labour and delivery today. The support person is now permitted to visit for the duration of the mother's stay, as long as the support person does not leave the hospital (see [here](#)).

#### Human Resources Update

- Staff who have not yet applied for the COVID 19 vaccine are encouraged to apply by completing the Vaccination Request Form (see [here](#)). Please direct any questions to Alison Maclean at 784-6253 or [covidvaccine@westernhealth.nl.ca](mailto:covidvaccine@westernhealth.nl.ca)
- Plans are in place to increase staff access to FIT testing across the region. Questions and requests should be directed to Allan Park at (709) 784-5255.
- Rotational workers must now self-isolate away from their families for 14 days and are no longer able to have a COVID test on day seven. Information about how to self-isolate can be found [here](#). Staff who may be impacted or who have questions can contact Employee Health at 1-833-710-0408.
- Plans are currently being developed to restrict and/or minimize staff movement. Where possible and where practical, employees who work in acute care facilities will not work in long term care facilities. Situations will be reviewed on a case-by-case basis in keeping with this guidance (see [here](#)).
- Student placements that are primarily observational in nature and/or delivered by group instruction will not be going ahead at this time. Other student placements can continue during the next two weeks with the following modifications:

- Individual student placements must be restricted to a single facility for the duration of the placement.
- Students may not simultaneously participate in clinical placements in long-term care while working in any other health care setting.
- There are so many things to be thankful for despite these difficult times. Choose to focus on the positive using gratitude. What are some things that you are thankful for right now? If you're feeling overwhelmed, contact the Employee Assistance Program (EAP) at 1-866-784-5306.
- Please feel free to call the Toll Free COVID-19 Navigation Staff Line (1-833-920-0096) or email [COVID19@westernhealth.nl.ca](mailto:COVID19@westernhealth.nl.ca) with your questions or inquiries.

Please see our [COVID-19 Intranet page](#) for more information.