



Newfoundland & Labrador

PROVINCIAL PUBLIC HEALTH LABORATORY NETWORK

Dr. LA Miller Centre, 100 Forest Road, St. John's, NL A1A 3Z9

(709) 777-6583

www.publichealthlab.ca

MEMORANDUM

FROM: NL PROVINCIAL PUBLIC HEALTH MICROBIOLOGY LABORATORY
TO: ALL HEALTHCARE WORKERS IN NEWFOUNDLAND AND LABRADOR
RE: SWAB NOTIFICATION – SEEGENE GENETM SWAB
DATE: FEBRUARY 15, 2021

Beginning February 16, 2021, PHML will be distributing an alternative sample collection kit for the current eNAT specimen collection kit for COVID 19 and respiratory testing.

The new collection kit is called the Seegene GeneTM swab and has been validated for use at PHML.

Within the packet there is a nasopharyngeal (NP, thinner one) and an oral swab (thicker one); please use the NP swab **NOT** the oral swab for specimen collection (see picture below). As with the eNAT, these swabs are stable for 72 hours at refrigerated temperature and must be frozen for longer transit times to PHML. There is no change in process as a result of the change in the collection kit.



Please contact our Stores Department for supplies, 709-777-7123/709-777-6415 or follow your established processes for ordering.

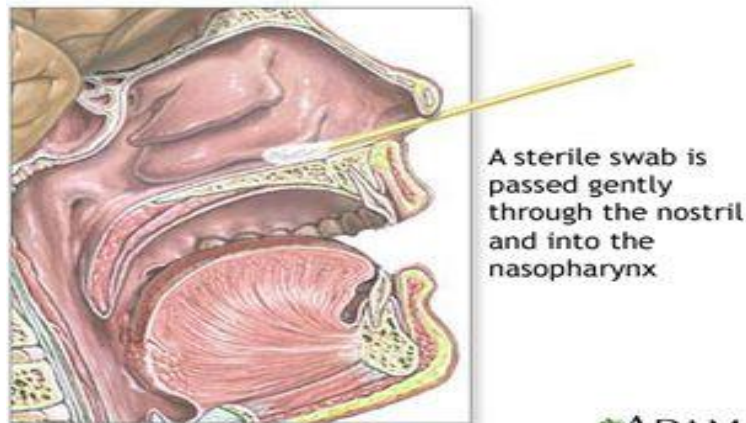
Questions related to this memorandum can be directed to the PHML Operations Manager at 709-777-2182 or hedy.daltonkenny@easternhealth.ca.

Patient related questions can be directed to the Microbiologist on Call through hospital locating at 709-777-6300 or microbiologistoncall@easternhealth.ca.



Instructions for Collection of Nasopharyngeal Swab

1. Use a NON-EXPIRED FLOQ swab supplied with the collection transport media.
2. With LEGIBLE PRINTING, label tube as outlined on the first page.
3. Explain the procedure to patient.
4. Collector is to wear PPE as per site Infection Control policy.
5. If the patient has a lot of mucus in the nose, this can interfere with the collection of cells. Either ask the patient to use a tissue to gently clean out visible nasal mucus or clean the nostril yourself with a cotton swab (e.g. Q-Tip).
6. How to estimate the distance to the nasopharynx: Prior to insertion, measure the distance from the corner of the nose to the front of the ear and insert the shaft approximately 2/3 of this length.
7. Seat the patient comfortably. Tilt the patient's head back slightly to straighten the passage from the front of the nose to the nasopharynx to make an insertion of the swab easier.
8. Insert the swab along the medial part of the septum, along the floor of the nose, until it reaches the posterior nares; gentle rotation of the swab may be helpful. (If resistance is encountered, try the other nostril; the patient may have a deviated septum).
9. Allow the swab to sit in place for 5 – 10 seconds.
10. Rotate the swab several times to dislodge the columnar epithelial cells. Note: Insertion of the swab may induce a cough.
11. Withdraw the swab and place it in the collection tube. Break swab shaft along score line. Replace cap securely.
12. Place tube in biohazard bag.
13. Remove gloves and wash hands.
14. Attach completed requisition.
15. Arrange refrigerated transport to the PHML which is open 24/7 to accept specimens.



For a video on collection of an NP swab please see: <http://www.youtube.com/watch?v=TFwSefezlHU>